

The most important information we need from you is **“Accurate Measurements”** of your kitchen space. This will allow **HomeKO’s** kitchen specialists to help you design the kitchen of your dreams!

Following the measuring instructions, carefully prepare a simple floor plan of your kitchen. Your completed floor plan should resemble the diagram shown to the right. Make sure you show exact locations of doors, windows, hood vents, exhaust, gas line, water line, drains, switches, outlets, light fixtures, wall mounted phones, a/c vents, cable TV and any other information you may consider vital.

DOUBLE CHECK ALL MEASUREMENTS.

MEASURING INSTRUCTIONS

Using a tape measure and graph paper, measure as outlined below.

Horizontal Measurement

- 1 Measure from wall to wall at 36" height.
- 2 Measure from corner to window or door trim edge.
- 3 Measure across opening from trim edge to trim edge.
- 4 Measure from edge of trim to far wall. Compare sum of #2, #3 and #4 measurements to step #1.
- 5 Mark exact location of water, drain, gas lines and electrical outlets and switches on drawing.
- 6 Measure from wall to wall above window and compare to #1.

Vertical Measurement

- 7 Measure from floor to window sill.
- 8 Measure from window sill to top of window.
- 9 Measure from top of window to ceiling.
- 10 Measure from floor to ceiling – Compare to sum of #7, #8 and #9.

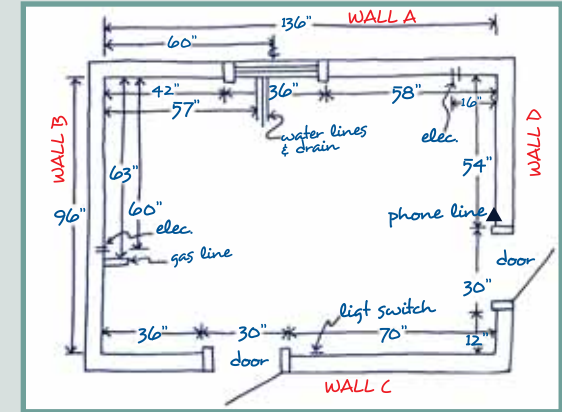
REPEAT THE SAME PROCEDURE WITH EACH WALL.

APPLIANCE INFORMATION

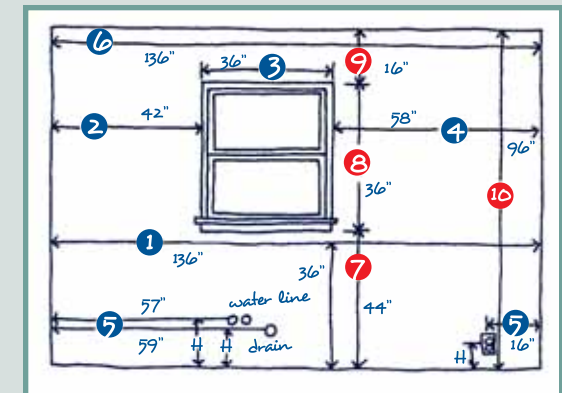
SIZE W x D x H <small>(width x depth x height)</small>	HINGE POSITION (facing appliance) <small>(left / right)</small>
REFRIGERATOR	(L) (R)
FREEZER	(L) (R)
RANGE (STOVE) / COOK TOP	(L) (R)
WALL OVEN	(L) (R)
MICROWAVE	(L) (R)
EXHAUST HOOD	(L) (R)
SINK	(L) (R)
DISHWASHER	(L) (R)
	(L) (R)
	(L) (R)

COMMENTS / NOTES / QUESTIONS

floor plan



wall a



wall b

